

DETAILS OF DAMAGE TO INFRASTRUCTURE
OF TPSODL DURING THE CYCLONE 'GULAB'
ON 26TH SEPTEMBER 2021

Photographs of Damages of Infrastructure of TPSODL



BEFORE(TILTED POLE)



AFTER

Photographs of Damages of Infrastructure of TPSODL



BEFORE



AFTER
RESTRINGING



POLE BROKEN AT HANUMANTHPUR

Photographs of Damages of Infrastructure of TPSODL



BEFORE



AFTER

Photographs of Damages of Infrastructure of TPSODL



Photographs of Damages of Infrastructure of TPSODL



Photographs of Damages of Infrastructure of TPSODL

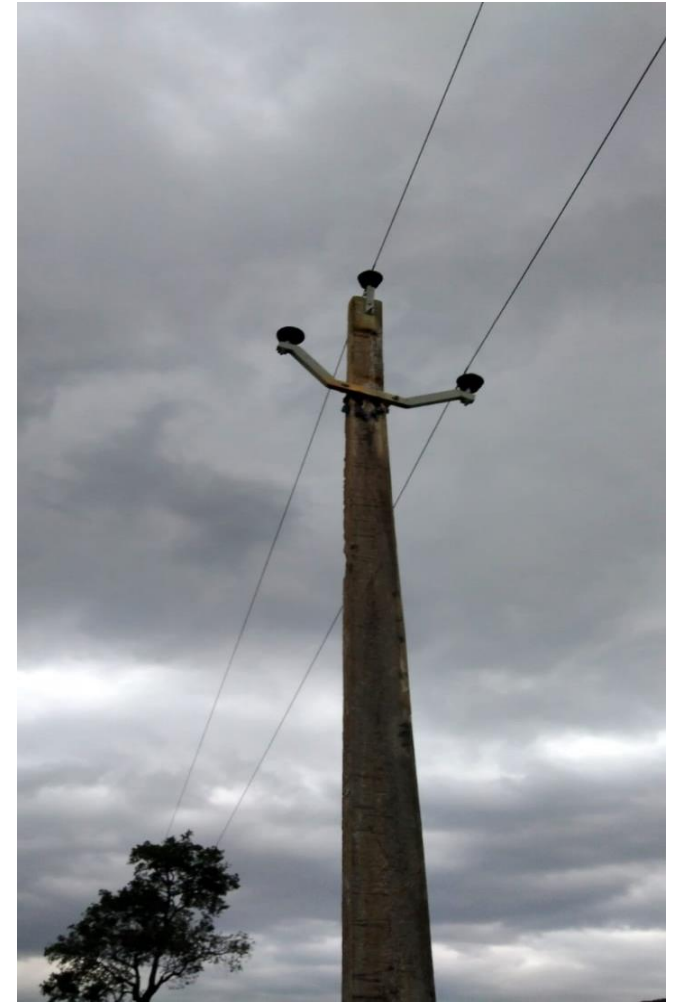


Photographs of Damages of Infrastructure of TPSODL



Twisted Conductor of 33KV Budhamba Feeder

Photographs of Damages of Infrastructure of TPSODL



Photographs of Damages of Infrastructure of TPSODL



Photographs of Damages of Infrastructure of TPSODL



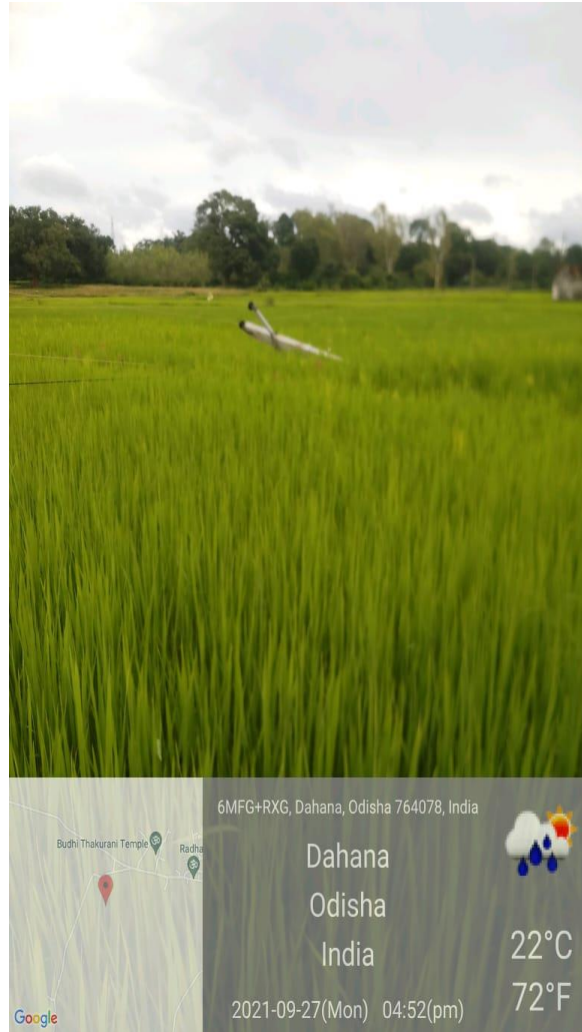
Photographs of Damages of Infrastructure of TPSODL



Photographs of Damages of Infrastructure of TPSODL



Photographs of Damages of Infrastructure of TPSODL



Photographs of Damages of Infrastructure of TPSODL



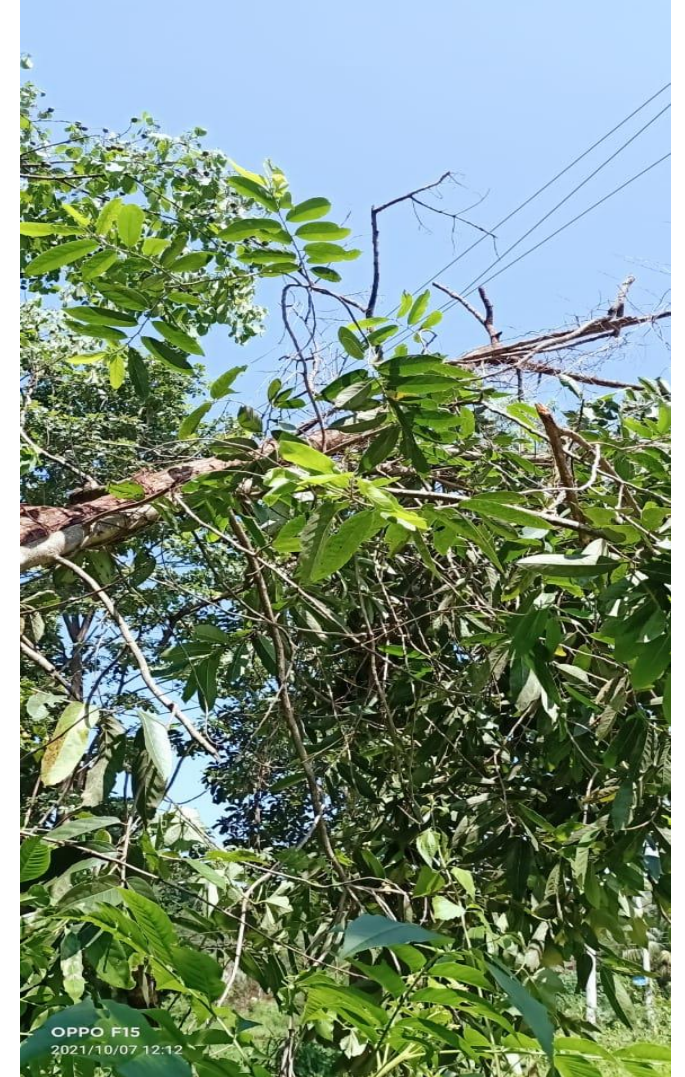
Photographs of Damages of Infrastructure of TPSODL



Photographs of Damages of Infrastructure of TPSODL



Photographs of Damages of Infrastructure of TPSODL



Photographs of Damages of Infrastructure of TPSODL



Photographs of Damages of Infrastructure of TPSODL



Format- VI (for Energy Dept.)									
Requirement of funds for immediate repair/ restoration of electrical infrastructure damaged due to very severe cyclonic storm "GULAB" and Consequent flood/heavy rain & storm Surge , as per SDRF/ NDRF Norms (Rs. In Lakh)									
Name of the Power Division : TPSODL									
SI No.	Sector	Name of the Dept.	Item	Damage in physical terms (items / Nos. etc	Actual Damage assessed (Total damage in Lakhs. In Rs.)	Requirement of funds for repair of immediate nature	Out of (7) amount available from annual maintenance budget	Out of (7) amount available from related schemes / programmes / other souce	Out of (7) amount proposed to be from SDRF / NDRF
1	2	3	4	5	6	7	8	9	10
1	Electrical Lines	TPSODL	No. of Feeder transformer damaged	0	0	0	0	0	0
2			No. of 33 KV poles damaged	0	0	0	0	0	0
3			Length of 33KV conductor damaged	0	0	0	0	0	0
4			No. of 11KV Transformer damaged	0	0	0	0	0	0
5			No. of 11KV poles damaged	155	6.2	6.2	0	0	6.2
6			Length of 11KV conductor damaged	272.3	136.2	136.2	0	0	136.2
7			No. of DTs. Damaged	159	159	159	0	0	159
8			No. of LT lines poles damaged	100	4	4	0	0	4
9			Length of LT line conductor damaged	45.43	22.72	22.72	0	0	22.72
10			Other (if any)	0	0	0	0	0	0
			Total		328.07	328.07	0	0	328.07